



Do you want hair like Beyonce?
Then look no further.....the Lace Front Wigs are making their way down under.
You can order your **Beyonce Wig** at **Darker Shades of Beauty** and have it fitted professionally

Product information

What is a Full Lace front wig?

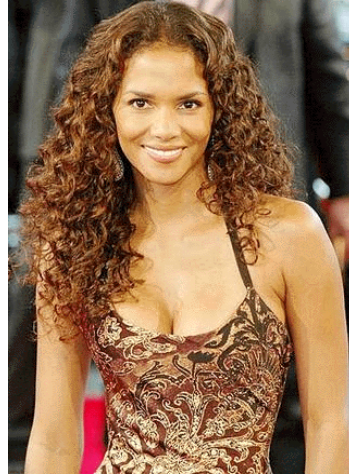
This is the **ultimate in wigs** because it looks **natural** from every angle. Some call them invisible hairline unit. A Full Lace Wig has a thin lace around the whole hairline and can be parted anywhere on the head and also worn in a ponytail.

The object of the extra long lace at the front of the wig is to be cut almost along the hairline (leave about 1cm of lace) at the forehead to create a new hairline. Most popular attachment for lace wigs are special double sided tape adhesive or glue. It is **recommended** to have this process **attended to by professionals**. The application duration of the glue varies with the different products. Some lasts 3 days, some 10 days and others like the Safe Grip can last up to 6 weeks. The tape adhesive can last 3 days.

PLEASE NOTE:

Celebrity inspired pictures are used only to show transformation of what you can achieve with these wigs.





Lace Frontals

Lace Frontal is beneficial if you are experiencing **thinning hair** in the front hairline and crown. This can be used in conjunction with hair wefts at the back of the head for a full or thick look. The Lace Frontals can be secured with tapes or glue.



What is a Lace front wig?

These types of wigs can also be used by people suffering from alopecia, hair thinning, balding etc.

Lace Front Wigs have a thin lace sole in the crown of the wig and extending from ear to ear. The wigs look like the hair is growing out of your head with baby hairs along the perimeter to give the effect of a naturally growing hairline. Lace Front Wigs can be parted on the sides, centre or any part of the head, but cannot be worn in a high ponytail.

NO GLUE! NO TAPE! NECESSARY
You can create a style in just 1 minute!

EQUAL LACE FRONT

- Sculpting tabs form a perfect fit
- Premium Quality Lace
- Natural Invisible Hair Line
- Longer Lace From Ear to Ear
- A One-Size Fits All Adjustable Cap

LACE FRONT INSTRUCTION

STEP 1 **STEP 2** **STEP 3**

1. Braid your hair in cornrow or secure by using hair clips.
2. "OPTIONAL" Trim the lace according to your hairline.
3. Style as you desire and look natural!!

This is also another popular Lace Front Wig and it requires no glue or tape but comes with 4 combs (1 in the front middle, 2 on each side above the ears and 1 at the back) to secure the wig in place. The extra long lace at the front of the wig should be cut along the hairline to create a new hairline. It looks just like your own hairline and it can be taken off at the end of the day or it can be sewn on quickly along the perimeter of the hair.



FRONT LACE WIG
100% PURE REMY HUMAN HAIR

GLUE DIRECTION

1. PUT ON WIG AND ADJUST HAIRLINE.
2. PLACEMENT SHOULD LOOK NATURAL.
3. CLEAN AREA ALONG THE EDGES OF NATURAL HAIR WITH CLEANING AGENT.
4. APPLY GLUE ALONG THE PERIMETER OF THE HAIRLINE.
5. AFTER GLUE DRIES, TRIM LACE ONE INCH AT A TIME.
6. WHEN DONE, WIG SHOULD LOOK NATURAL AND HAIRLINE CLEAN.
7. APPLY GLUE REMOVER ONE INCH AT A TIME AND REMOVE WIG SLOWLY.

Book your appointment today!

Contact Lynda on 08 8266 6898 or [Email](#)